

# G.J. Gardner. **HOMES**



## \* CUSTOM DESIGN FEATURES

Four Bedroom  
Ensuite  
Living Room  
Alfresco Porch  
Open Plan Living  
Internal Access  
Double Garage

Floor Area 180m<sup>2</sup>  
(over foundation)

Overall Dimensions  
(approximate)

Length 18.2m

Width 13.7m

## G.J. Gardner Homes provides

- \* Over 100 great plans to choose from or we can design something just for you
- \* Quality, service and backup from a local builder with national purchasing power
- \* Fixed contract price and a pre-agreed build time
- \* Full project management
- \* Quality fixtures and fittings, plus much much more, just ask us

### SHOWHOME

Pinecrest Drive, Gulf Harbour  
Phone: (09) 427 9231  
Under Construction

### RODNEY OFFICE

Tamariki Plaza, 20 Tamariki Avenue, Orewa  
Phone: (09) 427 9231  
rodney@gjgardner.co.nz  
OPEN Monday to Friday 8.30am-5.00pm

**Copyright:** These designs and illustrations remain the property of G.J. Gardner Homes and may not be used or reproduced in whole or in part without written consent.

**Please note:** Regional variations in products and building requirements may apply. Please check all working drawings and specifications provided by the local franchise building your home.

Image is artist's impression only, photos are sample only.

[www.gjgardner.co.nz](http://www.gjgardner.co.nz)



## \* DREAMS

AN EASIER WAY TO REALISE YOUR DREAMS

### WE PROMISE TO MAKE YOUR NEW HOME BUILDING EXPERIENCE A PLEASURE

We can take care of everything including permits, resource consents, planning issues, engineering, drainage and geotechnical reports. We can even help you find a section and sort out finance and payment terms to make it as simple as possible.

We project manage everything every step of the way and give you written assurances regarding costs, workmanship, material guarantees, completion dates and other key issues.

Our thoroughness is one reason why more people build with G.J. Gardner Homes than any other builder.

### \* WHEN YOU'RE LOOKING FOR A COMMITMENT, NOT JUST A BUILDER.

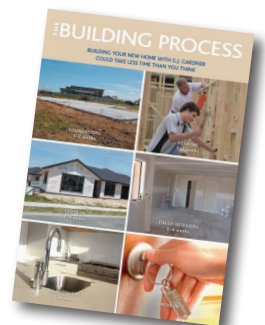


In the interest of comparing "apples with apples", we have published a builder checklist to help you understand the difference between our fixed contract price and a cheaper price from some other builders which become very expensive later on by adding a lot of "extras".

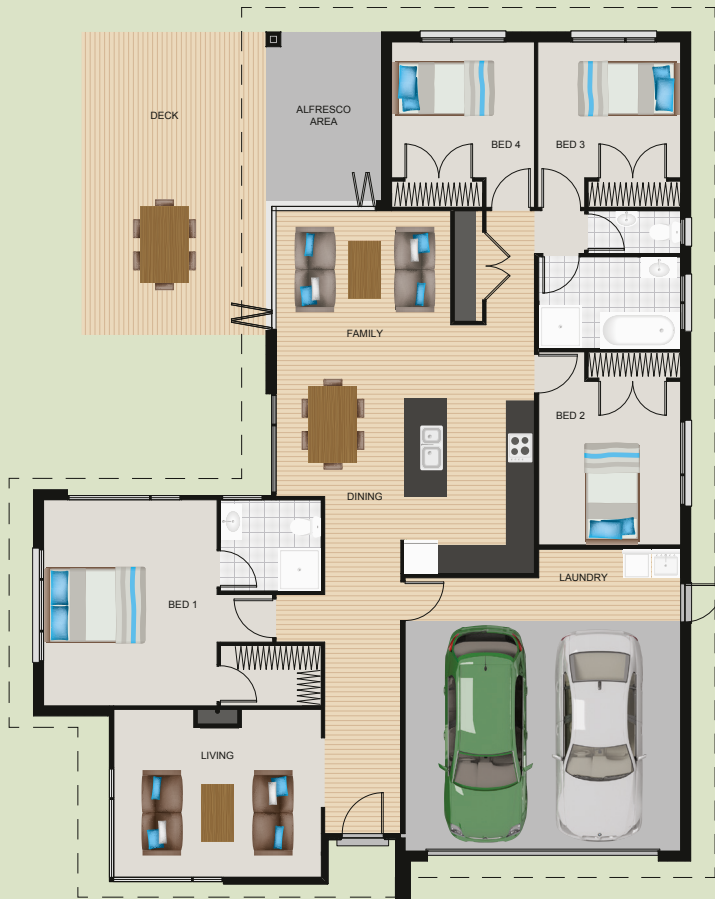
### BETTER VALUE ON BUILDING A NEW HOME

As the country's largest residential building group, we have excellent relationships with New Zealand's most respected building material suppliers. We are able to purchase materials and fittings at a better rate based on the buying power of a large national group, passing the savings on to you.

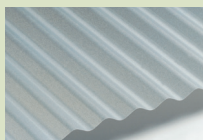
In many cases, we can complete a home (once the permit has been issued) within 12 to 14 weeks, depending on the size and style of home and the nature of your section. We make it easy for you to understand by guiding you through the process step-by-step.



### \* WHEN WE MAKE PROMISES, WE KEEP THEM.



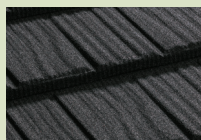
Here are just a few examples of the different kinds of materials you can choose from when you build with G.J. Gardner Homes.



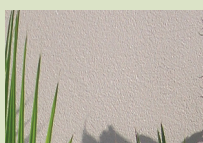
Long Run Iron



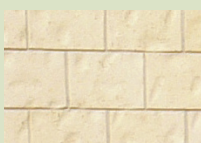
Concrete Tile



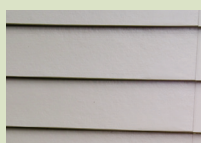
Metal Tile



Plaster



Brick



Weatherboard

**Copyright:** These designs and illustrations remain the property of G.J. Gardner Homes and may not be used or reproduced in whole or in part without written consent.

**Please note:** Regional variations in products and building requirements may apply. Please check all working drawings and specifications provided by the local franchise building your home.

Image is artist's impression only, photos are sample only.